

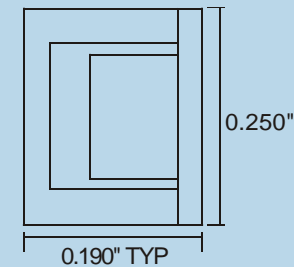


DIRECTIONAL COUPLERS

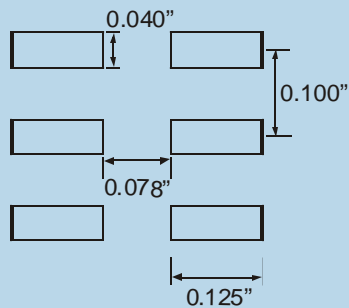


- 17, 16, 14.5, 12, 10 and 8 dB values available.
- 5 to 1,000 MHz frequency range.
- Available in bulk or tape and reel for automated placement.

SIDE VIEW

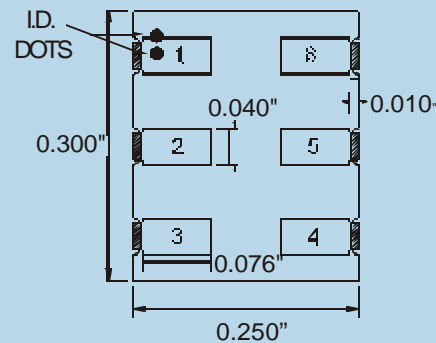


SUGGESTED PC BOARD
FOOTPRINT

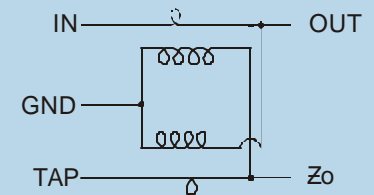


Input: Pin 1
 Ground: Pin 2
 Tap: Pin 3
 External Res: Pin 4
 NC: Pin 5
 Output: Pin 6

CERAMIC TOP VIEW



SCHEMATIC



ELECTRICAL PERFORMANCE



P/N dB Value Color I.D.	Frequency [MHz]	IN to OUT						IN to TAP				OUT to TAP
		Insertion Loss		Return Loss IN		Return Loss OUT		Insertion Loss		Return Loss TAP		Insertion Loss
		[dB]		[dB]		[dB]		[dB]		[dB]		[dB]
		TYP	MAX	TYP	MIN	TYP	MIN	TYP	MAX	TYP	MIN	TYP
CA009971 8 dB Blk-Blk	5	-1.3 ± 0.2	-1.5	20	18	22	18	-8 ± 0.2	-8.2	20	18	17
	10	-1.3 ± 0.2	-1.5	20	18	30	20	-8 ± 0.2	-8.2	20	18	18
	750	-1.6 ± 0.2	-1.8	20	18	22	18	-8 ± 0.2	-8 ± 0.25	20	18	16
	870	-1.6 ± 0.2	-1.8	20	18	22	18	-8 ± 0.2	-8 ± 0.25	20	18	16
	1000	-1.6 ± 0.2	-1.9	20	18	22	18	-8 ± 0.2	-8 ± 0.3	20	18	17
CA009898 10 dB Brw-Blk	5	-0.8 ± 0.2	-1.0	20	18	22	20	-10.5 ± 0.2	-10.7	20	18	26
	10	-0.8 ± 0.2	-1.0	22	20	22	20	-10.5 ± 0.2	-10.7	20	18	26
	750	-1.0 ± 0.2	-1.2	20	18	20	18	-10.3 ± 0.2	-10.3 ± 0.3	18	16	17
	870	-1.1 ± 0.2	-1.3	20	18	20	18	-10.3 ± 0.2	-10.3 ± 0.3	18	16	16
CA009899 12 dB Brw-Red	1000	-1.2 ± 0.2	-1.4	20	18	18	16	-10.3 ± 0.2	-10.3 ± 0.3	18	16	16
	5	-0.6 ± 0.2	-0.8	22	20	24	20	-12.2 ± 0.2	-12.4	22	20	24
	10	-0.6 ± 0.2	-0.8	22	20	24	20	-12.2 ± 0.2	-12.4	22	20	24
	750	-0.9 ± 0.2	-1.15	20	18	20	18	-12.1 ± 0.2	-12.1 ± 0.3	20	18	19
CA009966 14.5 dB Brw-Gre	870	-1.0 ± 0.2	-1.25	20	18	20	18	-12.1 ± 0.2	-12.1 ± 0.3	20	18	17
	1000	-1.1 ± 0.2	-1.35	20	18	20	18	-12.1 ± 0.2	-12.1 ± 0.3	20	18	15
	5	0.9 ± 0.1	-1.05	20	18	20	18	-14.7 ± 0.2	-14.9	18	17	26
	10	0.8 ± 0.1	-0.9	22	18	22	18	-14.5 ± 0.2	-14.7	20	18	26
	750	0.7 ± 0.1	-0.8	24	20	30	20	-14.5 ± 0.2	-14.7	24	20	13
CA009968 16 dB Brw-Blu	870	0.7 ± 0.1	-0.8	30	20	30	20	-14.5 ± 0.2	-14.7	24	20	13
	1000	0.7 ± 0.1	0.7 ± 0.15	30	20	30	20	-14.5 ± 0.2	-14.7	24	20	12
	5	-0.6 ± 0.1	-0.7	20	18	20	18	-16.1 ± 0.2	-16.3	20	18	26
	10	-0.6 ± 0.1	-0.7	22	18	22	18	-16.0 ± 0.2	-16.2	22	18	26
	750	-0.6 ± 0.1	-0.7	24	20	30	20	-16.0 ± 0.2	-16.2	30	20	16
CA009969 17 dB Brw-none	870	-0.6 ± 0.1	-0.7	30	20	30	20	-15.9 ± 0.2	-15.9 ± 0.25	30	20	15
	1000	-0.6 ± 0.1	-0.6 ± 0.2	30	20	30	20	-15.9 ± 0.2	-15.9 ± 0.25	30	20	15
	5	-0.4 ± 0.1	-0.5	22	20	24	20	-17.3 ± 0.2	-17.5	20	18	17
	10	-0.4 ± 0.1	-0.5	24	20	24	20	-17.2 ± 0.2	-17.4	22	18	17
	750	-0.4 ± 0.1	-0.5	24	20	22	20	-17.2 ± 0.2	-17.4	24	20	11
870	-0.5 ± 0.1	-0.65	20	18	20	18	-17.2 ± 0.2	-17.2 ± 0.25	24	20	10	

- * Temperature data available upon request.
- * Specifications subject to change without notice.
- * When compared to competitive parts, Communication Associates' couplers typically have similar or less insertion loss with significantly tighter tolerances.
- * System impedance is determined by external resistor. Data shown represents 75 Ω environment.
- * "Out to Tap" data shown are derived by subtracting "In to Tap" measurement from the actual "Out to Tap" measurement. This is also sometimes referred to as "directivity".